

LA VIELLE SOUCHE



©circuswerkplaats Dommelhof 2023-Katelijne Boonen

Performance by Samuel Rhyner | 2022 - 2023

In a dystopian far-future, meet *Trebor* (a tree in a pot) and *Robert* (an acrobat). Intertwined, leaning on one another, these two entities exist in sync, supporting each other throughout the one hour acrobatic dialogue that is *La Vieille Souche*. Intimate, minimalistic, absurd, optimistic and highly physical, the piece places *Robert* and *Trebor* on an equal footing. Following the connecting embrace between the two characters, the audience will go through the collective experience of planting *Trebor* at or around the performance site.

Location: Indoor and outdoor

Duration: 50-60 minutes

Capacity: max 300

Age: 8+

Performances per day: 1-2 x

STAGE

Flat, level, hard floor (concrete or wood), with black dancefloor on top.

Minimum stage size : circle of 8 meters of diameter (or square of 8 meters by 8 meters)

Height 5,5 meters minimum.

Sufficient audience space around the stage, 360°.

Seats for the audience.

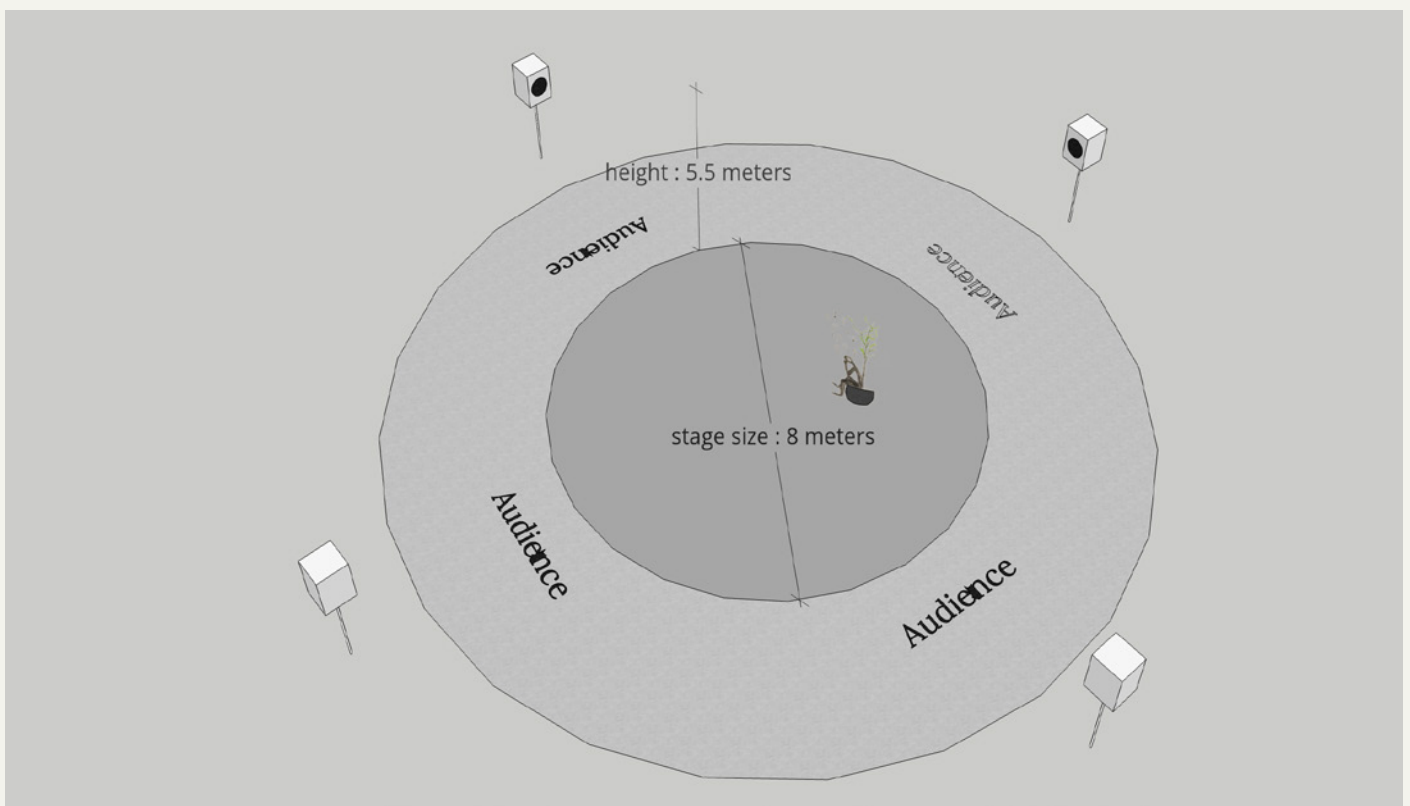
Access to electricity on stage.

Sound system adapted to the venue, 4 loudspeakers arranged around the stage, with a minijack.

Access to water (to water the tree after the performance).

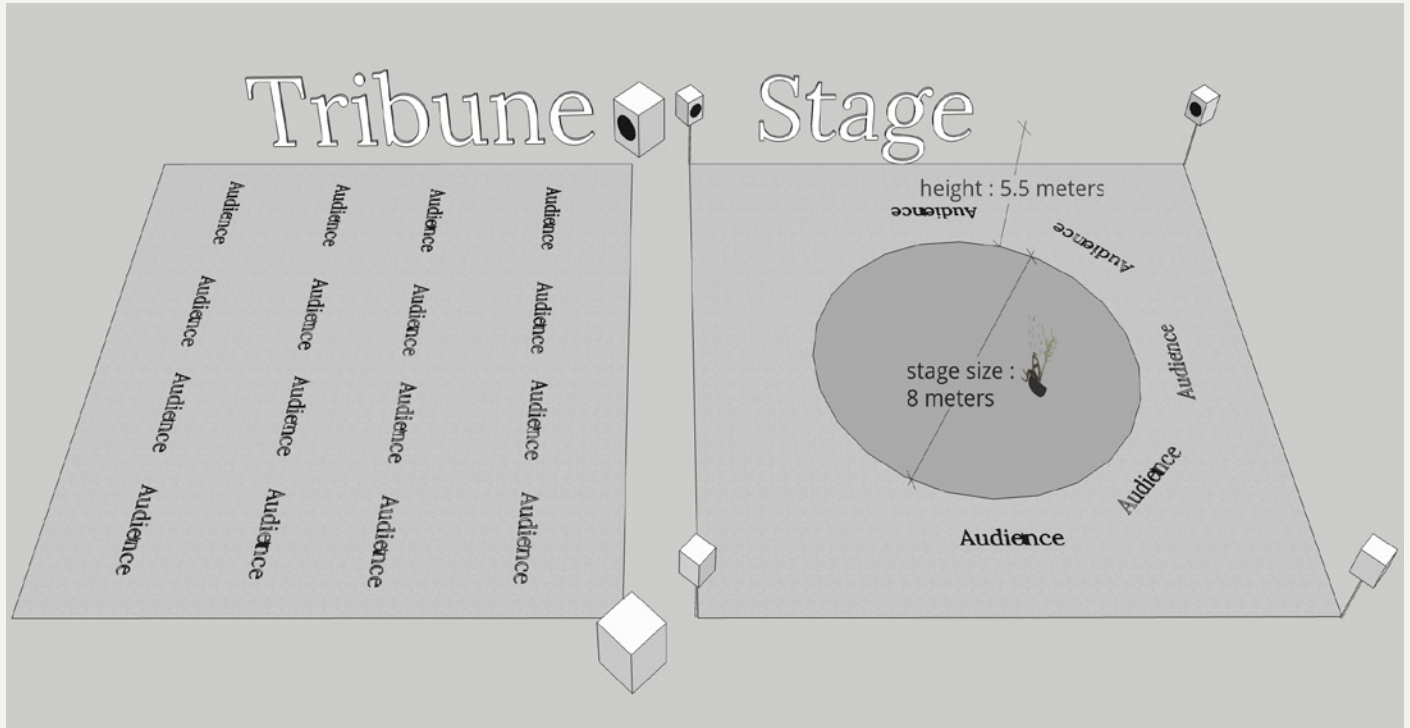
Planting location (check page 4).

If indoors, the door to enter and exit the performance location has to be a double door (approximately 2 x 2 meters)



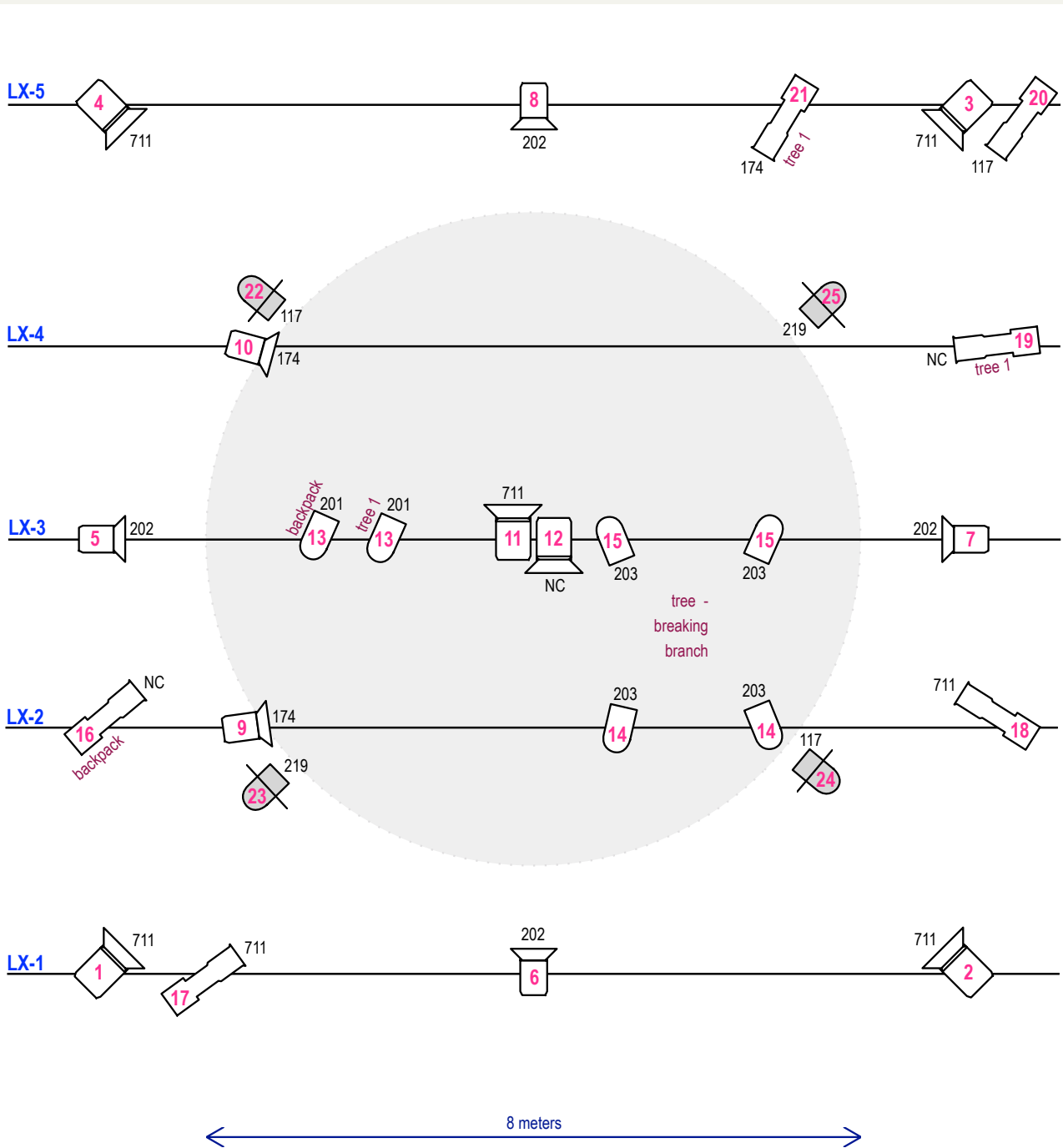
IN A THEATER

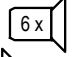
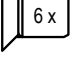
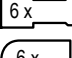
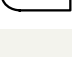
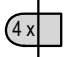
In case of performance in a theater, it is necessary to have some audience on the stage around the circular stage (stage on stage). It is possible to place the audience on 3 quarters of the stage only, allowing to seat additional audience in the tribune of the theater.



LIGHTS

If indoors or evening performance outdoors : stage lights following the light plot, including a Hazer.
 We need a DMX connection (we bring our own lightdesk).
 Lights for the planting location.
 If outdoors during the day, no lights needed.



-  = P.C. 1kW + barndoor
 -  = P.C. 2kW + barndoor
 -  = zoomprofile 1 kW
 -  = PAR64 CP62-1kW
 -  = PAR64 CP62-1kW + floorstand
- LEE colorfilters: 117, 174, 201, 202, 203, 219, 711**
- Total number of fixtures = 28**

Samuel Rhyner
La vieille souche

Lightplot - v2.1 september 2023
 Stage dimensions: 8 m. Ø / 5,5 m. height

Lightdesign by Bart Verzellenberg



2023 © Raidho Productions

LOCATION OF TREE PLANTING

In agreement with the artist, we find a place to plant the tree. The location has to be within 200 meters of the performance location, as the action of planting is part of the performance and it involves the audience. The aim of the operation is for the tree to grow and live its life as a tree in this new place. The space must therefore be sufficient and adapted to the chosen tree species.

A minimum of 1 square metre of space is needed for planting the tree and the pillars.

Here are a few examples of locations where we planted trees.



Brussels - february 2023



Gent - January 2023



Amsterdam - April 2023



Pelt - January 2023

THE TREE - POSSIBLE SPECIES

In collaboration with the artist and the performance location, we agree on a tree species for the performance. Here are a few examples :

If you have any specific request for another species, please contact us as soon as possible, and we see what is possible.



English oak (*Quercus robur*)

Height: 20-40 meters.

Crown: broad, spreading crown with sturdy branches. Leaves are lobed and dark green, turning golden-brown in autumn.

English Oak is a magnificent tree suitable for large gardens, parks, and woodland areas. It's also a significant species in natural forests and has historical and cultural importance in many regions.

Tolerates: It is adaptable to various soil types and can withstand urban environments.

Can live for over 1000 years.



Holm oak (*Quercus ilex*)

Height: 20-25 meters

Crown: It has a broad, ovoid-shaped crown that is dark and dense. The leaves are leathery, glossy, and typically spiny, resembling holly leaves.

Holm Oak is well-suited for a variety of environments. It is often used in landscaping for its evergreen foliage and ability to provide year-round shade. It's also valued for its resilience to drought and its adaptability to different soil types.

Tolerates partial paving, making it a good choice for urban environments or areas with hard surfaces.

Can live for over 500 years.



Portuguese laurel cherry (*Prunus lusitanica*)

Height: 5 - 10 meters

Crown: round, dark, dense crown, evergreen

Suitable for tree containers, roof gardens, coastal areas, industrial areas, patio

gardens

Tolerates partial paving.

Can live for 60-100 years.



English Hawthorn 'Paul's Scarlet' (*Crataegus laevigata* Paul's Scarlet)

Height: 5-6 meters.

Crown: rounded, spreading crown with dark green, lobed leaves. The flowers are double, deep pink to red, and very showy.

'Paul's Scarlet' is often used as an ornamental tree in gardens, parks, and along streetsides. It's known for its vibrant red flowers in spring.

It generally tolerates a range of soil types and can withstand urban pollution to some extent.

Can live for 50-150 years.



Field maple (*Acer campestre*)

Height: 8-15 meters, can reach up to 25 meters.

Crown: rounded to spreading crown with dense, dark green leaves that turn golden-yellow in the autumn.

Field Maple is versatile and can be used in a variety of settings including parks, gardens, and urban areas. It's also often used as a hedge or in hedgerows.

It is relatively adaptable to various soil types and can tolerate partial shading. It's considered hardy and can withstand urban pollution to some extent.

Can live up to 100-150 years.

PRACTICALITIES/OTHER

People on tour

We are two, one performer and one light and sound technician.

Parking

We need one parking spot for a car and a guarded parking for the trailer, and access to the performing location/loading dock with the car.

Food

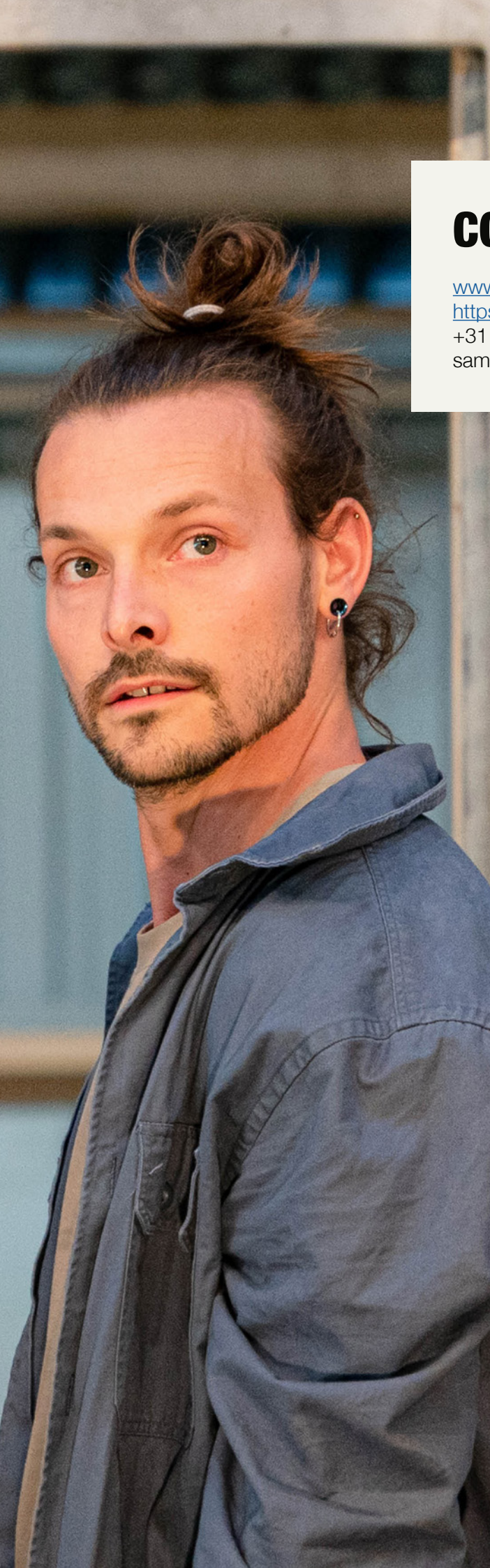
Breakfast, lunch and dinner for two people, vegetarian meals, for each performing day.

Accommodation

Two single hotel rooms between performing days and after the last performing day.

Watering the tree

We kindly ask the festival to water the tree once the week following the planting and once two weeks after, to maximize the chance of survival.



CONTACT

www.samuelrhyner.com

<https://www.instagram.com/samuel.rhyner/>

+31 627165596

sam.rhyner@gmail.com

